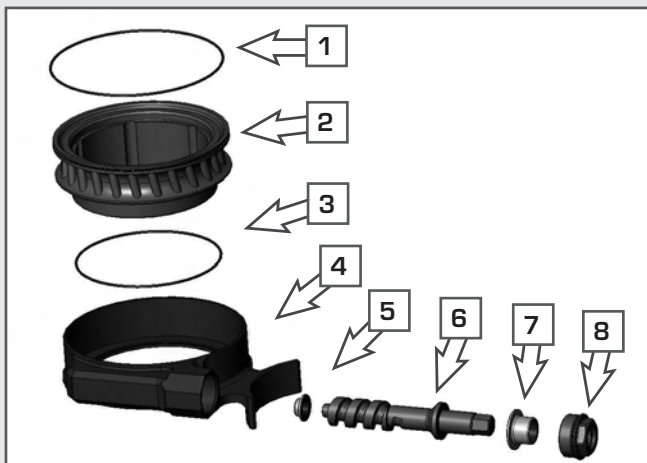




MOUNTING INSTRUCTIONS PRELOAD ADJUSTER XTRIG RACING TECHNOLOGY



Scope of supply:

1. Upper sealing ring
2. Adjusting nut
3. Lower sealing ring
4. Preload adjuster casing
5. Rear worm bearing
6. Drive worm
7. Front worm bearing
8. Nut for worm support

Thank you for purchasing an XTRIG racing technology product.

All of our products are designed and built to the highest standard, using the finest materials available.

XTRIG racing technology is race proven to offer the ultimate in performance.

XTRIG cannot be held liable for improper installation or use of this product.

Please follow the instructions provided.

If you are unsure of any installation procedure, please contact an authorized dealer. Thank you.

Mounting instructions for the XTRIG Preload Adjuster

Some of the details contained in these instructions may vary from model to model. This is a basic description of how to install and handle the Preload Adjuster.

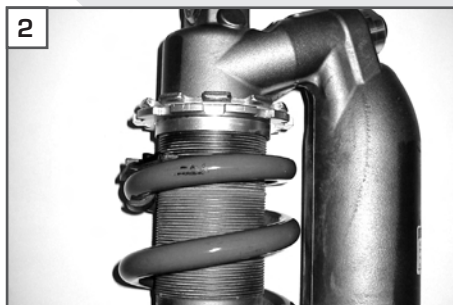
Preparatory steps:

Dismount and clean your motorcycle's shock absorber.

To dismount the suspension spring and mount the XTRIG Preload Adjuster:



Loosen the counter nut on the preload rings with a suitable tool.



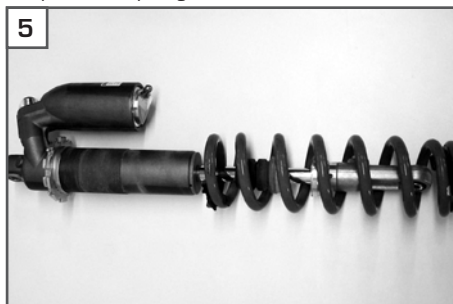
Loosen the preload rings and turn them to the end of the thread on the shock absorber for maximum tension release on the suspension spring.



Press the spring all the way up and push back the rubber bump with a screwdriver.



Remove the spring retainer on the shock absorber (can vary from model to model).

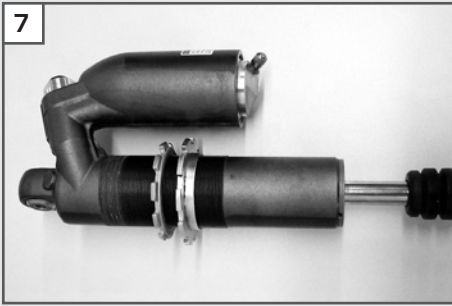


Remove the spring from the shock absorber.



IMPORTANT: thoroughly clean the thread on the shock absorber and inspect the thread for damage. Repair the thread if it is defective.

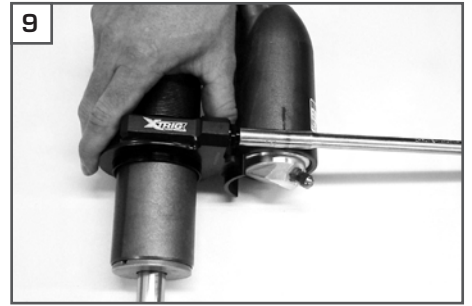
racing technology



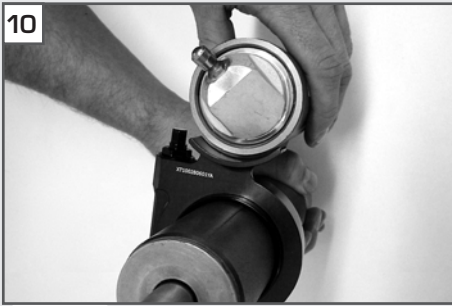
Remove the factory preload ring.



Slip the Xtrig Preload Adjuster on the shock absorber.



Hold the Preload Adjuster with one hand while you turn the Preload Adjuster in a counterclockwise direction up the thread with an 8 mm T-wrench. Make sure not to tilt or jam the thread.



Make sure the Preload Adjuster mount is in the correct position to keep it from blocking, which can damage the thread.



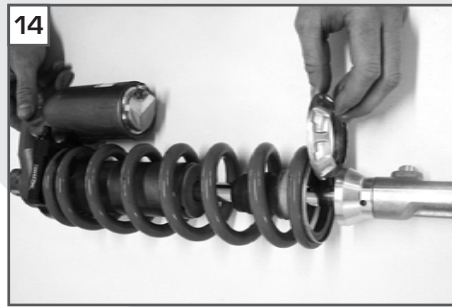
Turn to at least half of the Preload Adjuster mount and check whether the position is correct.



When you pass the middle of the mount you can turn the Preload Adjuster with a cordless screwdriver instead of the T-wrench for faster mounting.



Make sure not to screw the Preload Adjuster all the way to the end of the thread since this can damage the thread.



Mount the spring on the shock absorber and insert the spring retainer.



Preload the spring through the Xtrig Preload Adjuster and make sure the spring retainer is in the correct position.



Mount the sticker with the scale on the compensating tank to make it easier to adjust the preload.

Final steps:

Mount the shock absorber on your motorcycle and conveniently adjust the spring preload from the outside with an 8mm T-wrench.

Note!

The transmission ratio of the Preload Adjuster is 1:24. This means that 24 turns of the 8mm T-wrench are required to change the suspension spring preload by one turn.